



MEET THE NEW 2.00 MAX CROWN

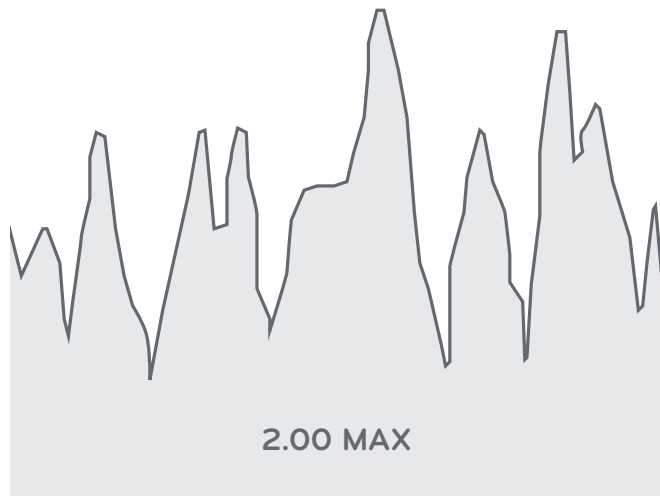
**LUMINAL GAIN**  
**WHERE YOU**  
**NEED IT MOST**

CSI® | CARDIOVASCULAR  
SYSTEMS, INC.

# INCREASED DIAMOND EXPOSURE DELIVERS OPTIMAL LUMINAL GAIN ABOVE THE KNEE

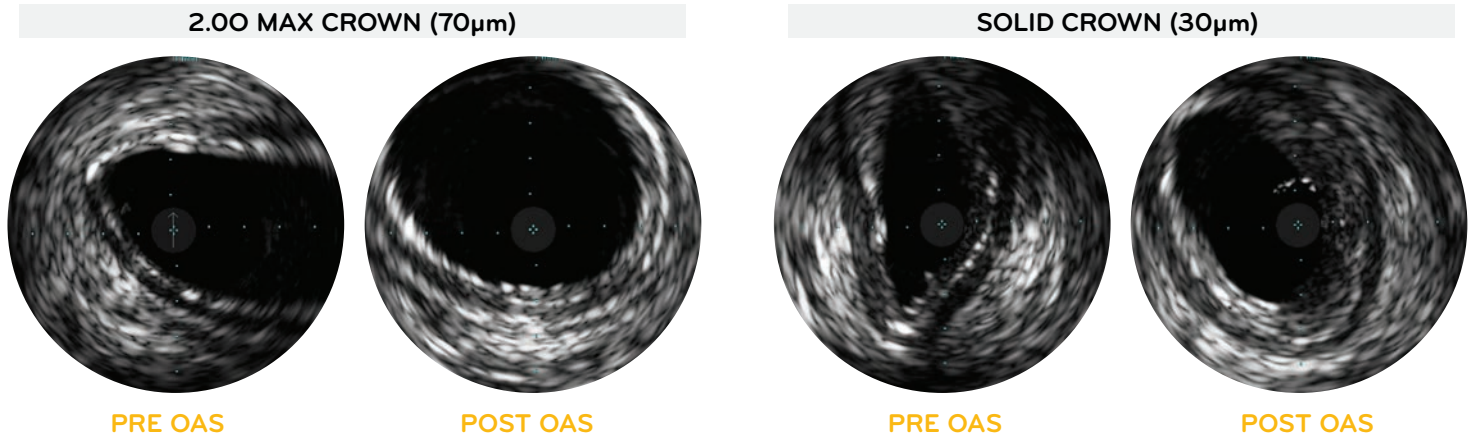
## MADE FOR MIXED PLAQUE

The new 2.00 Max Crown for the Diamondback 360® Peripheral Orbital Atherectomy System features more peaks and valleys than our Solid and Classic crowns. This provides increased lesion engagement to better modify mild to moderately calcified lesions above the knee.<sup>1</sup>



## LUMINAL GAIN IN LARGE VESSELS

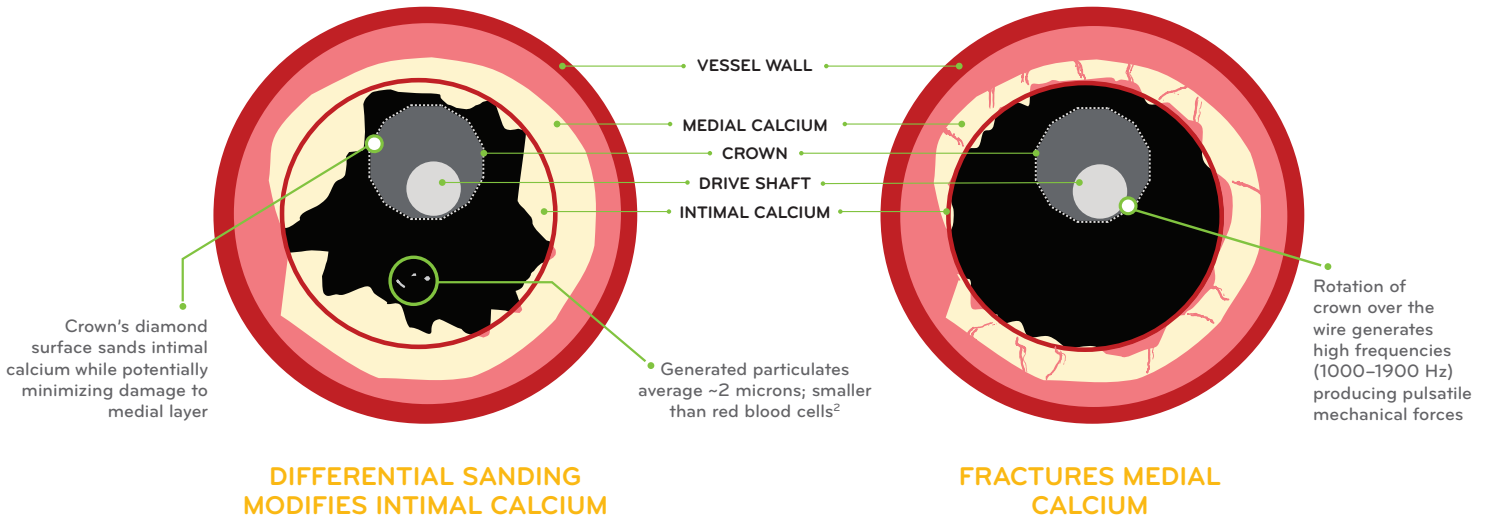
The larger 70-micron diamond coating more efficiently sands the lesion, providing more luminal gain than the existing 30-micron portfolio of crowns.






Testing completed in cadaveric models. Post OAS images were taken after 3 runs on low speed, 2 runs on medium speed, and 1 run on high speed.

## TRUSTED PLATFORM, PROVEN MECHANISM OF ACTION

Built off the Diamondback 360 Orbital Atherectomy platform, the 2.00 Max Crown facilitates vessel compliance change.



# THE RIGHT CROWN FOR THE CASE

	2.00 MAX CROWN	SOLID CROWN	CLASSIC CROWN
CROWN TYPE			
PLAQUE MORPHOLOGY	Mild–moderate calcium	Moderate–severe calcium	Moderate–severe calcium
HOW IT WORKS	Provides more engagement with mixed plaque	Delivers efficient sanding in calcification	Gives you the flexibility to treat in tight vessel bends and ostial lesions
DIAMOND MICRON COATING	70µm	30µm	30µm

1. CSI data on file. Based on cadaveric testing.

2. CSI data on file. Calculation of mean particulate size is based off particles larger than 1 micron from a representative study using carbon blocks and cadaver model systems.

## INDIVIDUALIZED SOLUTIONS FOR UNIQUE CHALLENGES.

For more information, please contact your local CSI representative or call **1-877-274-0901**.



CARDIOVASCULAR  
SYSTEMS, INC.

1225 Old Hwy 8 NW  
St. Paul, MN 55112

T: 651.259.1600  
877.274.0901

F: 612.677.3355  
W: [csi360.com](http://csi360.com)

CSI and Diamondback 360 are registered trademarks of Cardiovascular Systems. ©2022 Cardiovascular Systems, Inc. All Rights Reserved. EN-7265.A 0922